



# aquatherm red pipe PRODUCT CATALOGUE

**Pipe system made of polypropylene**  
for fire sprinkler systems

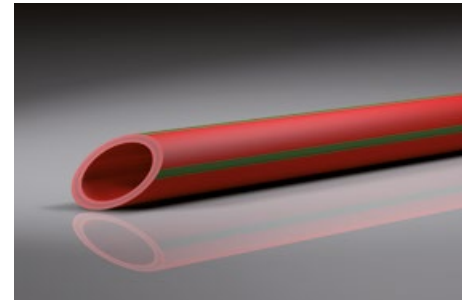
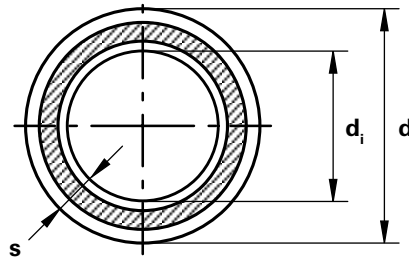


**aquatherm**  
state of the pipe



**PIPE, FITTINGS**

**Material:** PP-R FS  
**Pipe series:** SDR 7,4  
**Packing Unit:** straight length á 6 m  
**Colour:** red/4 green stripes

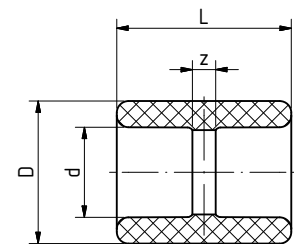
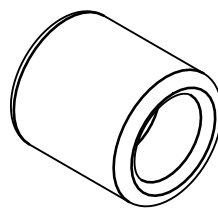


**aquatherm red pipe PIPE SDR 7,4 / B1**

Art. no.	Dimension [mm]	PU m/pc	Price € m/pc	Diameter d [mm]	Wall thickness s [mm]	Internal diameter d <sub>i</sub> [mm]	Water content [l/m]	Weight [kg/m]
4170712	32 x 4,4	60		32	4,4	23,2	0,423	0,400
4170714	40 x 5,5	60		40	5,5	29	0,660	0,621
4170716	50 x 6,9	30		50	6,9	36,2	1,029	0,968
4170718	63 x 8,6	30		63	8,6	45,8	1,647	1,521
4170720	75 x 10,3	18		75	10,3	54,4	2,323	2,165
4170722	90 x 12,3	12		90	12,3	65,4	3,358	3,101
4170724	110 x 15,1	12		110	15,1	79,8	4,999	4,642
4170726	125 x 17,1	6		125	17,1	90,8	6,472	5,974

**aquatherm red pipe PIPE SDR 11 / B1**

Art. no.	Dimension [mm]	PU m/pc	Price € m/pc	Diameter d [mm]	Wall thickness s [mm]	Internal diameter d <sub>i</sub> [mm]	Water content [l/m]	Weight [kg/m]
4170130	160 x 14,6	5,8		160	14,6	130,8	13,430	6,940

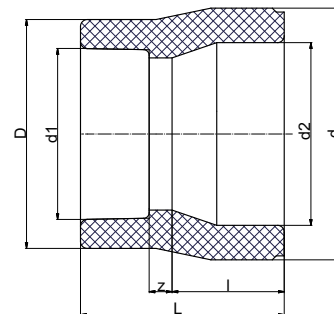
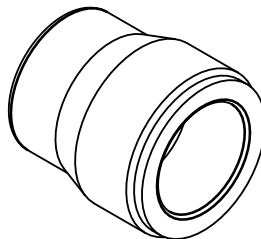


**aquatherm red pipe SOCKET / B1**

Art. no.	Dimension [mm]	PU m/pc	Price € m/pc	d [mm]	L [mm]	z [mm]	D [mm]	Weight [kg/m]
4111012	32	5		32	40,5	4,5	43	0,027
4111014	40	5		40	51,5	6,5	52	0,044
4111016	50	5		50	53	6	68	0,086
4111018	63	1		63	60,5	5,5	84	0,145
4111020	75	1		75	66,5	6,5	100	0,233
4111022	90	1		90	72,5	6,5	120	0,353
4111024	110	1		110	82	8	147	0,606
4111026	125	1		125	92	12	167	0,819

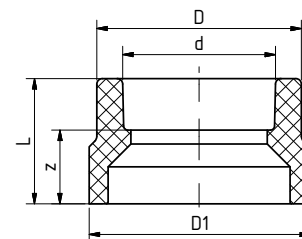
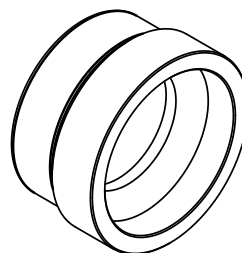
Art. no.=article number, PU=Packing unit, d=Diameter (mm), s=wall thickness (mm), d<sub>i</sub>=internal diameter (mm), f=female thread, m=male thread

FITTINGS



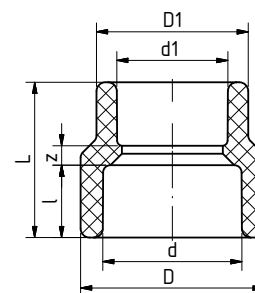
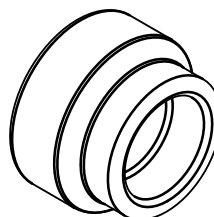
**aquatherm red pipe REDUCER / B1**

SDR	Art. no.	Dimension [mm]	PU m/pc	Price € m/pc	d [mm]	d1 [mm]	d2 [mm]	L [mm]	l [mm]	z [mm]	D [mm]	Weight [kg]
socket welding												
7,4	<b>4111122</b>	40/32	5		40	32	26,50	50	20,5	11,5	43	0,033
	<b>4111128</b>	50/32	5		50	32	33,50	54	23,5	9	52	0,059
	<b>4111130</b>	50/40	5		50	40	33,50	53	23,5	12,5	68	0,122
	<b>4111138</b>	63/50	1		63	50	42,00	63,5	27,5	17,5	84	0,232
	<b>4111140</b>	75/50	1		75	50	50,00	63	30	18,5	100	0,281
	<b>4111142</b>	75/63	1		75	63	50,00	71	30	29	120	0,564
	<b>4111152</b>	90/63	1		90	63	60,00	78	33	26	120	0,831
	<b>4111153</b>	90/75	1		90	75	60,00	81,5	33	35	147	0,811
	<b>4111155</b>	110/63	1		110	63	73,50	86	37	17	29,5	0,045
	<b>4111159</b>	110/90	1		110	90	73,50	99	37	23	29,5	0,081
	<b>4111163</b>	125/90	1		125	90	84,00	99	40	9,5	68	0,143
<b>4111165</b>	125/110	1		125	110	84,00	112	40	21,5	84	0,363	



**aquatherm red pipe REDUCER / B1**

SDR	Art. no.	Dimension [mm]	PU m/pc	Price € m/pc	D1 [mm]	d [mm]	L [mm]	z [mm]	D [mm]	Weight [kg]
butt welding										
11	<b>4111175</b>	160/110	1		160	110	90	53	147	0,681
	<b>4111177</b>	160/125	1		160	125	90	50	167	0,729

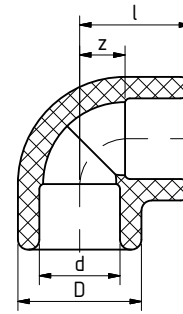
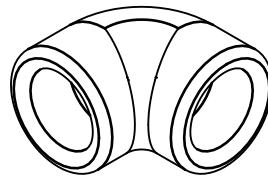


**aquatherm red pipe REDUCING SOCKET / B1**

female/female

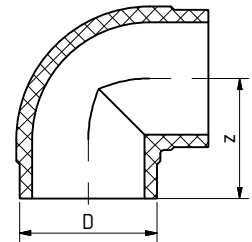
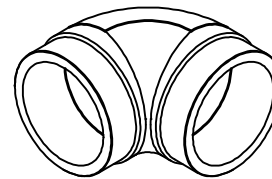
Art. no.	Dimension [mm]	PU m/pc	Price € m/pc	d [mm]	d1 [mm]	L [mm]	l [mm]	z [mm]	D [mm]	D1 [mm]	Weight [kg]
<b>4111238</b>	63/50	1		63	50	56	27,5	5	84	68	0,126
<b>4111242</b>	75/63	1		75	63	62,5	30	5	100	84	0,191
<b>4111253</b>	90/75	1		90	75	69	33	6	120	100	0,297

FITTINGS



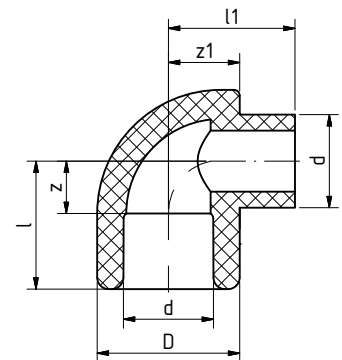
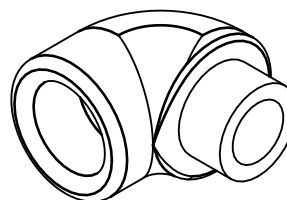
**aquatherm red pipe ELBOW 90°/ B1**

SDR	Art. no.	Dimension [mm]	PU m/pc	Price € m/pc	D [mm]	z [mm]	l [mm]	D [mm]	Weight [kg]
socket welding									
7,4	<b>4112112</b>	32	5		32	17	35	43	0,043
	<b>4112114</b>	40	5		40	21	41,5	52	0,071
	<b>4112116</b>	50	5		50	26	49,5	68	0,158
	<b>4112118</b>	63	1		63	32,5	60	84	0,276
	<b>4112120</b>	75	1		75	38,5	68,5	100	0,446
	<b>4112122</b>	90	1		90	46	79	120	0,798
	<b>4112124</b>	110	1		110	56	93	147	1,323
	<b>4112126</b>	125	1		125	76,5	116,5	167	2,026



**aquatherm red pipe ELBOW 90°/ B1**

SDR	Art. no.	Dimension [mm]	PU m/pc	Price € m/pc	D [mm]	z [mm]	Weight [kg]
butt welding							
11	<b>4112131</b>	160	1		160	145	1,976

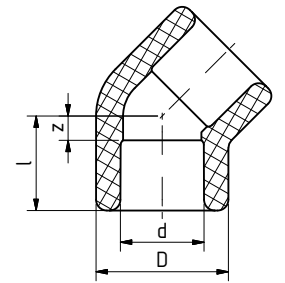
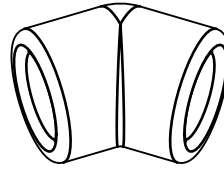


**aquatherm red pipe ELBOW 90°/ B1**

female/male

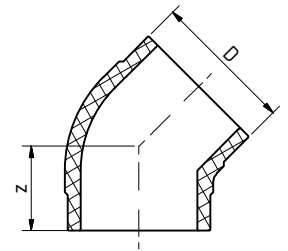
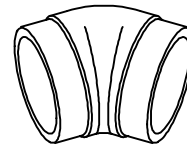
Art. no.	Dimension [mm]	PU m/pc	Price € m/pc	d [mm]	z [mm]	l [mm]	D [mm]	l1 [mm]	z1 [mm]	Weight [kg]
<b>4112312</b>	32	5		32	17	35	43	39	21,5	0,049
<b>4112314</b>	40	5		40	21	41,5	52	45,5	26	0,081

FITTINGS



**aquatherm red pipe ELBOW 45° / B1**

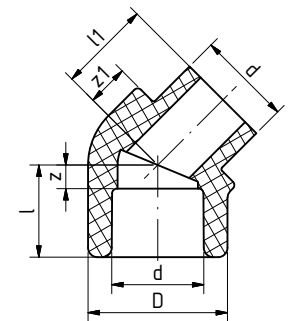
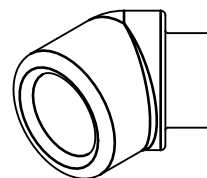
SDR	Art. no.	Dimension [mm]	PU m/pc	Price € m/pc	d [mm]	z [mm]	l [mm]	D [mm]	Weight [kg]
					socket welding				
7,4	4112512	32	5		32	7,5	25,5	43	0,035
	4112514	40	5		40	9,5	30	52	0,057
	4112516	50	5		50	11,5	35	68	0,112
	4112518	63	1		63	14	41,5	84	0,233
	4112520	75	1		75	16,5	46,5	100	0,353
	4112522	90	1		90	19,5	52,5	120	0,571
	4112524	110	1		110	23,5	60,5	147	0,993
	4112526	125	1		125	27	67	167	1,281



**aquatherm red pipe ELBOW 45° / B1**

SDR	Art. no.	Dimension [mm]	PU m/pc	Price € m/pc	z [mm]	D [mm]	Weight [kg]
					butt welding		
11	4112531	160	1		95	160	1,463

**Advice: Special elbows in diverse degree sizes on request**

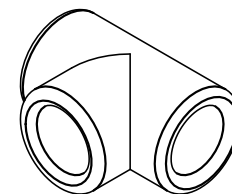
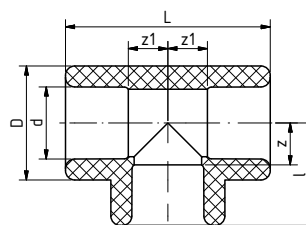


**aquatherm red pipe ELBOW 45° / B1**

female/male

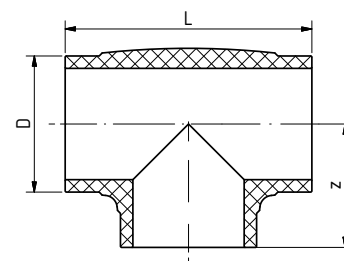
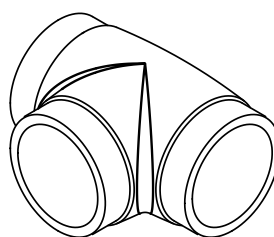
Art. no.	Dimension [mm]	PU m/pc	Price € m/pc	d [mm]	z [mm]	l [mm]	D [mm]	l1 [mm]	z1 [mm]	Weight [kg]
4112712	32	5		32	7,5	25,5	43	28,5	11,5	0,036
4112714	40	5		40	9,5	30	52	30,5	13,5	0,059

FITTINGS



aquatherm red pipe TEE / B1

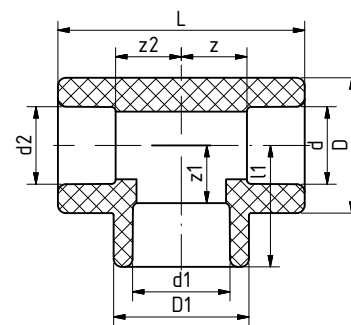
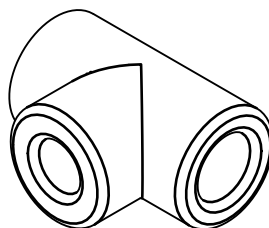
SDR	Art. no.	Dimension [mm]	PU m/pc	Price € m/pc	d [mm]	D [mm]	l [mm]	z [mm]	L [mm]	z1 [mm]	Weight [kg]
socket welding											
7,4	4113112	32	5		32	43	33,5	15,5	70	17	0,053
	4113114	40	5		40	52	40,5	20	81	20	0,093
	4113116	50	5		50	68	49,5	26	99	26	0,200
	4113118	63	1		63	84	60	32,5	120	32,5	0,377
	4113120	75	1		75	100	68,5	38,5	137	38,5	0,537
	4113122	90	1		90	120	80	47	158	46	0,986
	4113124	110	1		110	147	93	56	186	56	1,632
	4113126	125	1		125	167	116,5	76,5	233	76,5	2,693



aquatherm red pipe TEE / B1

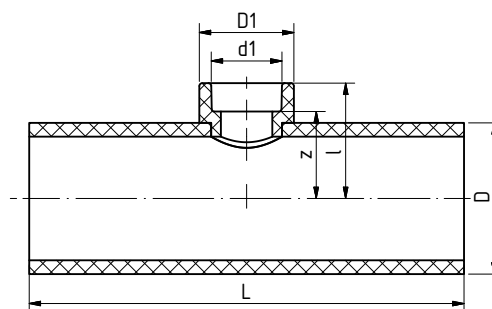
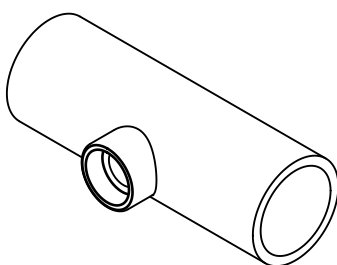
SDR	Art. no.	Dimension [mm]	PU m/pc	Price € m/pc	D [mm]	z [mm]	L [mm]	Weight [kg]
butt welding								
11	4113131	160	1		160	145	290	2,838

FITTINGS



**aquatherm red pipe REDUCING TEE / B1**

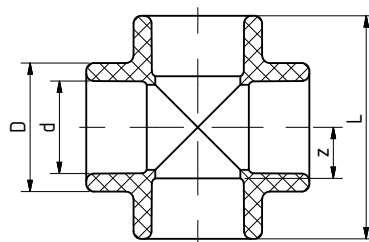
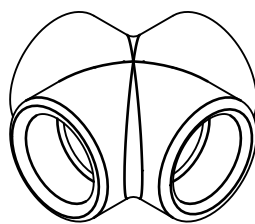
SDR	Art. no.	Dimension [mm]	PU m/pc	Price € m/pc	d [mm]	z [mm]	D [mm]	d1 [mm]	l1 [mm]	z1 [mm]	D1 [mm]	d2 [mm]	L [mm]	z2 [mm]	Weight [kg]
socket welding															
7,4	4113546	40x32x40	5		40	21,5	52	32	40,5	22,5	52	40	84	21,5	0,106
	4113550	50x32x50	5		50	26	68	32	44,5	26,5	43	50	99	26	0,174
	4113551	50x40x50	5		50	26	68	40	49,5	29	68	50	99	26	0,221
	4113556	63x32x63	1		63	32,5	84	32	53,5	35,5	52	63	120	32,5	0,355
	4113558	63x40x63	1		63	32,5	84	40	53,5	33	52	63	120	32,5	0,341
	4113560	63x50x63	1		63	32,5	84	50	60	36,5	68	63	120	32,5	0,411
	4113566	75x40x75	1		75	38,5	100	40	59	38,5	52	75	137	38,5	0,494
	4113568	75x50x75	1		75	38,5	100	50	66	42,5	84	75	137	38,5	0,540
	4113570	75x63x75	1		75	38,5	100	63	66	38,5	84	75	137	38,5	0,507
	4113578	90x40x90	1		90	46	120	40	66,5	46	52	90	158	46	0,986
	4113580	90x50x90	1		90	46	120	50	69,5	46	68	90	158	46	0,976
	4113582	90x63x90	1		90	46	120	63	73,5	46	84	90	158	46	0,969
	4113584	90x75x90	1		90	46	120	75	76	46	100	90	158	46	0,997
	4113586	110x63x110	1		110	56	147	63	83,5	56	84	110	186	56	1,691
	4113588	110x75x110	1		110	56	147	75	86	56	100	110	186	56	1,634
	4113590	110x90x110	1		110	56	147	90	89	56	120	110	186	56	1,569
	4113592	125x75x125	1		125	76,5	167	75	106,5	76,5	100	125	233	76,5	2,475
	4113594	125x90x125	1		125	76,5	167	90	109,5	76,5	120	125	233	76,5	2,542
4113596	125x110x125	1		125	76,5	167	110	113,5	76,5	147	125	233	76,5	2,606	



**aquatherm red pipe REDUCING TEE / B1**

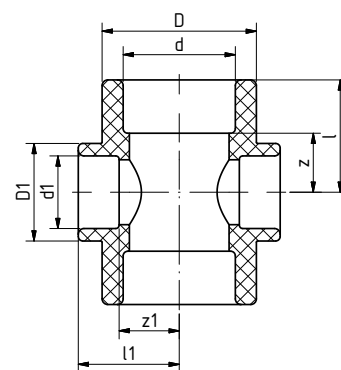
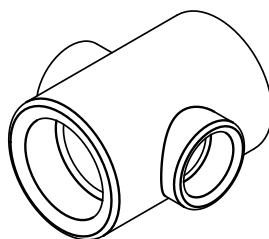
SDR	Art. no.	Dimension [mm]	PU m/pc	Price € m/pc	D [mm]	d1 [mm]	D1 [mm]	L [mm]	l [mm]	z [mm]	Weight [kg]
butt welding											
11	4113601	160x75x160	1		160	75	100	460	122	92	3,397
	4113603	160x90x160	1		160	90	120	460	125	92	3,517

FITTINGS



**aquatherm red pipe CROSS / B1**

Art. no.	Dimension [mm]	PU m/pc	Price € m/pc	d [mm]	z [mm]	L [mm]	D [mm]	Weight [kg]
4113712	32	5		32	17	70	43	0,064
4113714	40	5		40	21	83	52	0,101

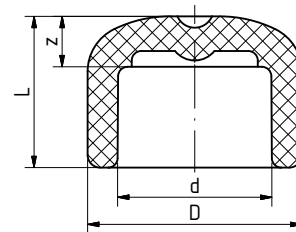
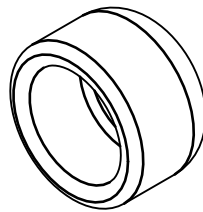


**aquatherm red pipe REDUCING TEE / B1**

Art. no.	Dimension [mm]	PU m/pc	Price € m/pc	d1 [mm]	z1 [mm]	D1 [mm]	l1 [mm]	d [mm]	z [mm]	D [mm]	l [mm]	Weight [kg]
4113750	50/32	1		32	26,5	43	44,5	50	26	68	49,5	0,180
4113756	63/32	1		32	35,5	52	53,5	63	32,5	84	60	0,350
4113758	63/40	1		40	33	52	53,5	63	32,5	84	60	0,328
4113764	75/32	1		32	41	52	59	75	38,5	100	68,5	0,509
4113766	75/40	1		40	38,5	52	59	75	38,5	100	68,5	0,499
4113768	75/50	1		50	42,5	68	66	75	38,5	100	68,5	0,528
4113776	90/50	1		50	51,5	68	75	90	35,5	120	68,5	0,762

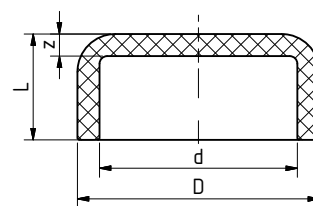
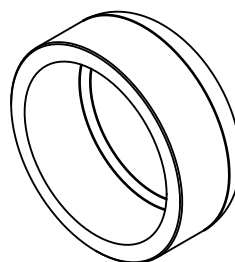


FITTINGS



**aquatherm red pipe END CAP / B1**

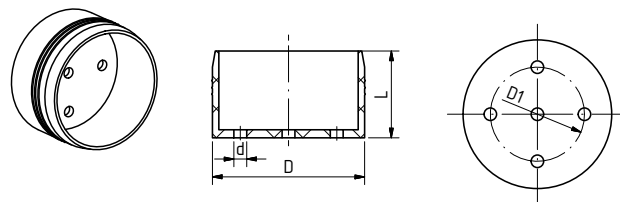
SDR	Art. no.	Dimension [mm]	PU m/pc	Price € m/pc	d [mm]	L [mm]	z [mm]	D [mm]	Weight [kg]
socket welding									
7,4	<b>4114112</b>	32	5		32	29	11	43	0,044
	<b>4114114</b>	40	5		40	38	17,5	52	0,042
	<b>4114116</b>	50	5		50	44,5	21	68	0,082
	<b>4114118</b>	63	1		63	52	24,5	84	0,153
	<b>4114120</b>	75	1		75	58,5	28,5	100	0,245
	<b>4114122</b>	90	1		90	67,5	34,5	120	0,377
	<b>4114124</b>	110	1		110	65	28	147	0,648
	<b>4114126</b>	125	1		125	82	42	167	0,872



**aquatherm red pipe END CAP / B1**

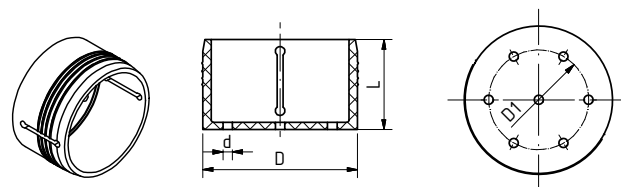
SDR	Art. no.	Dimension [mm]	PU m/pc	Price € m/pc	D [mm]	L [mm]	z [mm]	d [mm]	Weight [kg]
butt welding									
11	<b>4114131</b>	160	1		160	0,00	14,6	131	0,787

FITTINGS



**aquatherm red pipe BASE PART FOR SPRINKLER OUTLET**

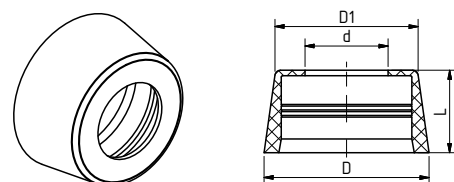
Art. no.		PU m/St	Price € m/pc	D [mm]	D1 [mm]	d [mm]	L [mm]	Weight [kg]
4114180	for visible sprinkler	25		47,35	30	4	27	0,013



**aquatherm red pipe BASE PART FOR SPRINKLER OUTLET**

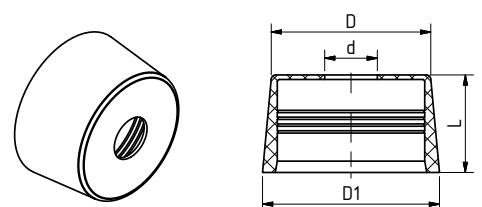
Art. no.		PU m/pc	Price € m/pc	D [mm]	D1 [mm]	d [mm]	L [mm]	Weight [kg]
4114190	for covered sprinkler	25		65	44	4	38	0,034

**aquatherm red pipe UPPER PART FOR SPRINKLER OUTLET**  
for visible sprinkler



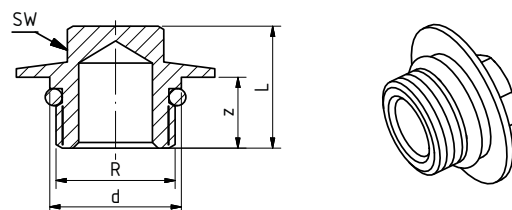
Art. no.	Dimension	PU m/pc	Price € m/pc	D [mm]	D1 [mm]	d [mm]	L [mm]	Weight [kg]
4114181	1/2"	25		60	51,4	23,2	30,5	0,022
4114182	3/4"	25		60	51,6	30,2	30	0,022
4114183	1"	25		60	51,6	35,2	30	0,021

**aquatherm red pipe UPPER PART FOR SPRINKLER OUTLET**  
for covered sprinkler



Art. no.	Dimension	PU m/pc	Price € m/pc	D [mm]	D1 [mm]	d [mm]	L [mm]	Weight [kg]
4114191	1/2"	25		70	78	23,2	43	0,057
4114192	3/4"	25		70	78	30,2	43	0,057
4114193	1"	25		70	78	35,2	43	0,056

**aquatherm red pipe PLUG FOR SPRINKLER OUTLET**

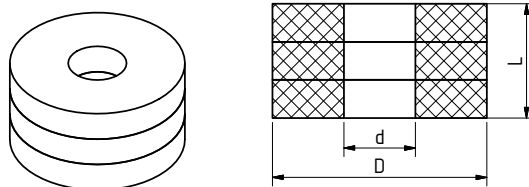


Art. no.	Dimension	PU m/pc	Price € m/pc	R	d [mm]	L [mm]	z [mm]	SW [mm]	Weight [kg]
4114185	1/2"	25		1/2"	23	21,5	12,5	15	0,043
4114186	3/4"	25		3/4"	30	23	12,5	17	0,058
4114187	1"	25		1"	35	24	13	17	0,076

FITTINGS

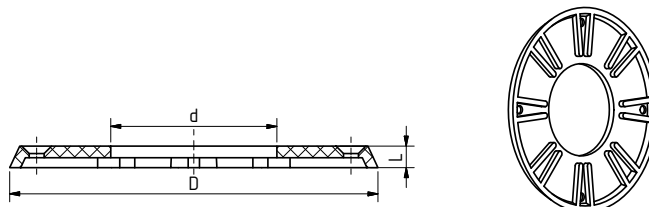
**aquatherm red pipe** TEMPORARY PLUG FOR PLASTER WORKS

made of PE foam



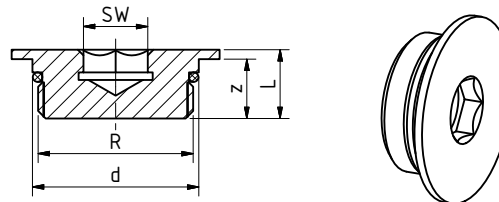
Art. no.	Dimension	PU m/pc	Price € m/pc	d [mm]	D [mm]	L [mm]	Weight [kg]
<b>4114178</b>	for 4114181, -82, -83	50		20	60	32	0,003
<b>4114179</b>	for 4114191, -92, -93	50		20	75,5	42	0,005

**aquatherm red pipe** SPRINKLER OUTLET

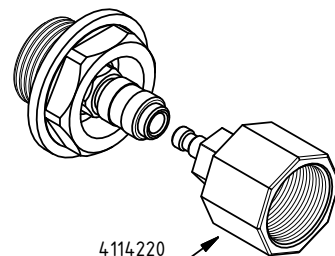
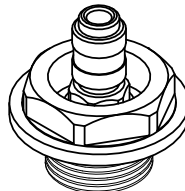
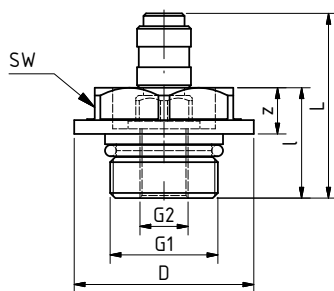


Art. no.	Dimension	PU m/pc	Price € m/pc	D [mm]	d [mm]	L [mm]	Weight [kg]
<b>4114200</b>	1 1/4"	10		100,1	44,1	6,5	0,028
<b>4114201</b>	1 1/2"	10		111,1	50,1	6,5	0,034
<b>4114202</b>	2"	10		126,1	61,1	6,5	0,043

**aquatherm red pipe** PLUG FOR SPRINKLER OUTLET



Art. no.	Dimension	PU m/pc	Price € m/pc	d [mm]	R	L [mm]	z [mm]	SW [mm]	Weight [kg]
<b>4114206</b>	1 1/4"	10		44	1 1/4"	18,2	15,7	17	0,203
<b>4114207</b>	1 1/2"	10		50	1 1/2"	18	15,5	17	0,260
<b>4114208</b>	2"	10		61	2"	20	17,5	17	0,443



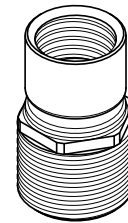
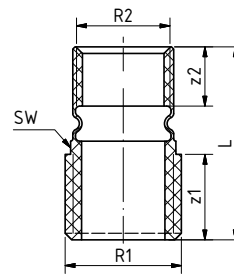
**aquatherm red pipe** PLUG FOR PRESSURE TEST

Art. no.	Dimension	PU m/pc	Price € m/pc	D [mm]	G1	G2	z [mm]	l [mm]	L [mm]	SW [mm]	Weight [kg]
<b>4114212</b>	1/2"	10		35	1/2"	1/8"	9	21,5	36	27	0,072
<b>4114213</b>	3/4"	10		35	3/4"	1/8"	9	21,5	36	27	0,093
<b>4114214</b>	1"	10		40	1"	1/8"	8,5	21,5	36	27	0,126

**aquatherm red pipe** COUPLING PLUG 1/2"

<b>4114220</b>	1/2" for Art.- No. 4114212, -13, -14	1									0,040
----------------	--------------------------------------	---	--	--	--	--	--	--	--	--	-------

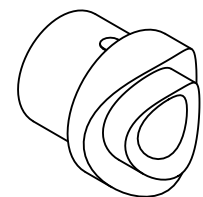
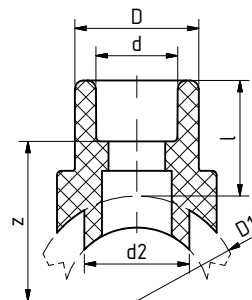
FITTINGS



**aquatherm red pipe COMPENSATING JOINT**

Art. no.	Dimension	PU m/pc	Price € m/pc	R1	z1 [mm]	R2	z2 [mm]	L [mm]	SW [mm]	Weight [kg]
4114230	3/4"mx3/8"f	10		3/4"	17,5	3/8"	15,5	44	24	0,054
4114232	3/4"mx1/2"f	10		3/4"	19,5	1/2"	13,5	44	24	0,043
4114234	1"mx1"f	10		1"	17	1"	17	45	36	0,067
4114236	1"mx1/2"f	10		1"	19,5	1/2"	13,5	44	30	0,052

Without VdS-approval



**aquatherm red pipe WELD-IN SADDLE**

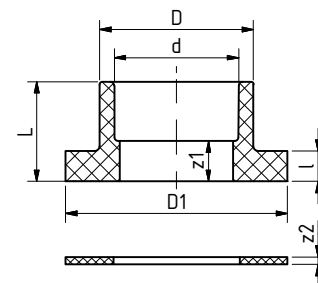
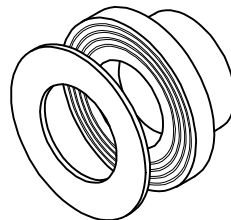
SDR	Art. no.	Dimension [mm]	PU m/pc	Price € m/pc	D1 [mm]	d [mm]	d2 [mm]	l [mm]	z [mm]	D [mm]	Weight [kg]
7,4	socket welding										
	4115168	63/32	5		63	32	32	30	43,5	43	0,028
	4115174	75/32	5		75	32	32	30	49,5	43	0,028
	4115175	75/40	5		75	40	40	34	51	52	0,049
	4115180	90/32	5		90	32	32	30	57	43	0,029
	4115181	90/40	5		90	40	40	34	58,5	52	0,048
	4115186	110/32	5		110	32	32	30	67	43	0,030
	4115188	110/40	5		110	40	40	34	68,5	52	0,050
	4115189	110/50	5		110	50	50	34	65,5	68	0,030
	4115194	125/32	5		125	32	32	30	74,5	43	0,029
	4115196	125/40	5		125	40	40	34	76	52	0,050
	4115197	125/50	5		125	50	50	34	73	68	0,030
4115198	125/63	5		125	63	63	38	73	84	0,154	
11	butt welding										
	4115216	160/63	5		160	63	63	38	0,00	84	0,054
	4115218	160/75	5		160	75	75	42	92	100	0,248
	4115220	160/90	5		160	90	90	45	92	120	0,368

With weld-on surface and weld-in socket to be fused with the inner wall of the pipe.

The required tools for the fusion of **aquatherm red pipe** weld-in saddles are listed on page 34:

**aquatherm red pipe** weld-in saddle tools Art. no. 50614–50658 **aquatherm** drill Art. no. 50940–50952

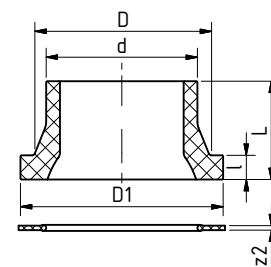
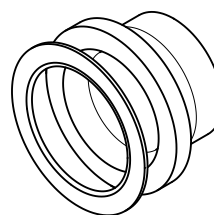
FITTINGS



**aquatherm red pipe WELDABLE FLANGE ADAPTER / B1**

with joint ring

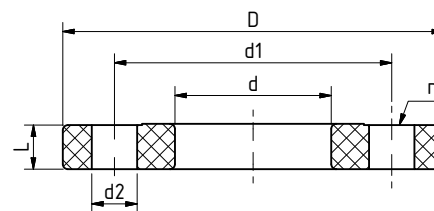
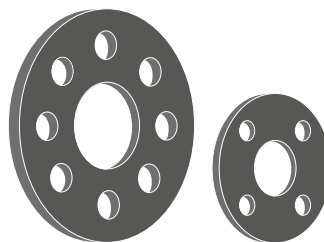
SDR	Art. no.	Dimension [mm]	PU m/pc	Price € m/pc	d [mm]	L [mm]	z1 [mm]	D [mm]	D1 [mm]	l [mm]	z2 [mm]	Weight [kg]
					socket welding							
7,4	4115512	32	1		32	34	16	41	68	10	3	0,053
	4115514	40	1		40	35,5	15	50	78	11	3	0,071
	4115516	50	1		50	39,5	17	61	88	12	3	0,095
	4115518	63	1		63	43,5	16	76	102	14	3	0,130
	4115520	75	1		75	46	16	90	122	16	3	0,191
	4115522	90	1		90	50	17	108	138	17	3	0,258
	4115524	110	1		110	55,5	18,5	131	158	18,5	3	0,329
	4115527	125	1		125	63	23	165	188	20	3	0,724



**aquatherm red pipe WELDABLE FLANGE ADAPTER / B1**

with joint ring

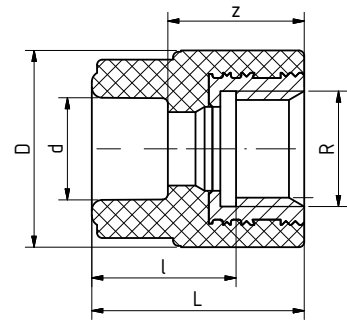
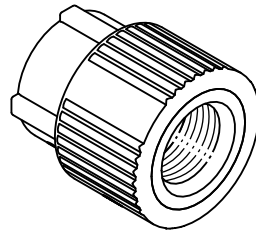
SDR	Art. no.	Dimension [mm]	PU m/pc	Price € m/pc	d [mm]	L [mm]	z1 [mm]	D [mm]	D1 [mm]	l [mm]	z2 [mm]	Weight [kg]
					butt welding							
11	4115531	160	1		160	93	3,00	175	212	25	3	1,065



**aquatherm red pipe STEEL FLANGE**

Art. no.	Dimension [mm]	PU m/pc	Price € m/pc	d [mm]	D [mm]	d1 [mm]	d2 [mm]	L [mm]	n	Weight [kg]
4115712	32	1		42	115	85	14	16	4	1,046
4115714	40	1		51	140	100	18	16	4	1,589
4115716	50	0		62	150	110	18	16	4	1,675
4115718	63	1		78	165	125	18	16	4	2,016
4115720	75	1		92	185	145	18	16	4	2,437
4115722	90	1		110	200	160	18	18	8	2,699
4115724	110	1		133	220	180	18	18	8	3,084
4115726	125	1		167	250	210	18	18	8	3,654
4115730	160	1		178	285	240	22	18	8	5,106

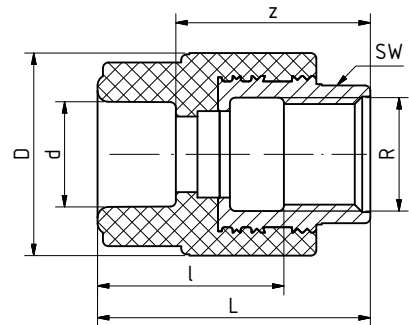
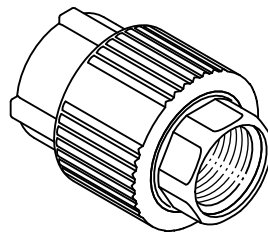
**TRANSITION PIECE**



**aquatherm red pipe TRANSITION PIECE / B1**

for the connection to sprinkler outlets  
round

Art. no.	Dimension	PU m/pc	Price € m/pc	d [mm]	l [mm]	z [mm]	D [mm]	L [mm]	R	Weight [kg]
<b>4121013</b>	32 mm x 3/4" f	5		32	30,5	25,5	43,5	43,5	3/4"	0,092
<b>4121014</b>	32 mm x 1/2" f	5		32	30	25	37,5	43	1/2"	0,076
<b>4121016</b>	40 mm x 1/2" f	5		40	32,5	25	37,5	45,5	1/2"	0,078
<b>4121017</b>	40 mm x 3/4" f	5		40	33	25,5	50	46	3/4"	0,105

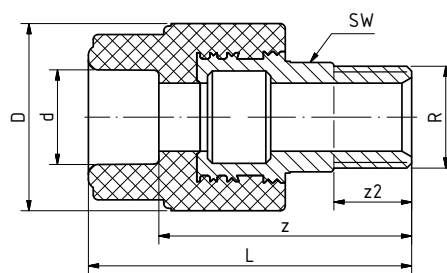
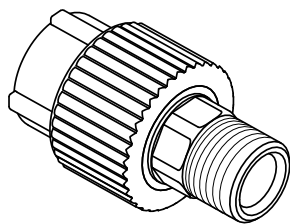


**aquatherm red pipe TRANSITION PIECE / B1**

with hexagon (\*suitable for the connection to sprinkler outlets)

Art. no.	Dimension	PU m/pc	Price € m/pc	d [mm]	l [mm]	z [mm]	D [mm]	L [mm]	R	SW [mm]	Weight [kg]
<b>4121113</b>	32 mm x 3/4" f	5		32	32	35	43,5	53	3/4"	31	0,104
<b>4121114*</b>	32 mm x 1" f	5		32	37,5	41,5	60	59,5	1"	39	0,239
<b>4121115*</b>	40 mm x 1" f	5		40	40	41,5	60	62	1"	39	0,227
<b>4121116</b>	40 mm x 1 1/4" f	5		40	40	42,5	74	63	1 1/4"	50	0,385
<b>4121117</b>	50 mm x 1 1/4" f	5		50	43	42,5	74	66	1 1/4"	50	0,404
<b>4121118</b>	50 mm x 1 1/2" f	5		50	45	43,5	85,5	67	1 1/2"	55	0,445
<b>4121119</b>	63 mm x 1 1/2" f	1		63	51,5	46	84	73,5	1 1/2"	55	0,479
<b>4121120</b>	63 mm x 2" f	1		63	50	49,5	101	76	2"	67	0,662
<b>4121122</b>	75 mm x 2" f	1		75	51	47	100	77	2"	67	0,671
<b>4121153</b>	32 mm x 1/2" f	5		32	37	35	37,5	53	1/2"	24	0,091
<b>4121154</b>	40 mm x 1/2" f	5		40	38	33,5	40	54	1/2"	24	0,094

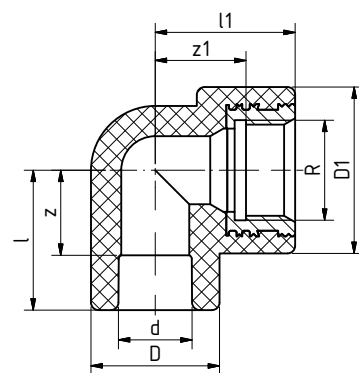
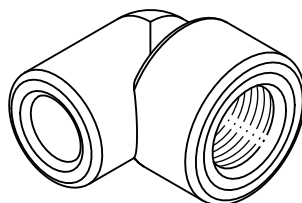
**TRANSITION PIECE**



**aquatherm red pipe TRANSITION PIECE / B1**

with hexagon

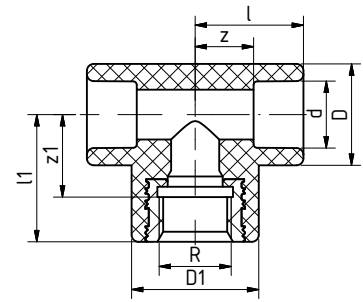
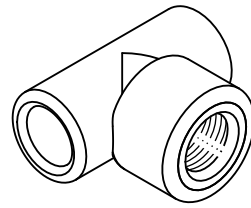
Art. no.	Dimension	PU m/pc	Price € m/pc	d [mm]	L [mm]	z [mm]	D [mm]	R	SW [mm]	z2 [mm]	Weight [kg]
4121313	32 mm x 3/4" m	5		32	69,5	51,5	38,5	3/4"	24	17	0,135
4121314	32 mm x 1" m	5		32	78,5	60,5	53	1"	32	20	0,244
4121316	32 mm x 1 1/4" m	5		32	81	63	68	1 1/4"	41	21	0,324
4121317	40 mm x 1" m	5		40	81	60,5	52	1"	32	20	0,251
4121318	40 mm x 1 1/4" m	5		40	84,5	64	68	1 1/4"	41	21	0,362
4121319	50 mm x 1 1/4" m	5		50	85,5	62	68	1 1/4"	41	21	0,389
4121320	50 mm x 1 1/2" m	5		50	88,5	65	74	1 1/2"	46	22	0,480
4121321	63 mm x 1 1/2" m	1		63	94,5	67	72,5	1 1/2"	46	22	0,523
4121322	63 mm x 2" m	1		63	102,5	75	84	2"	50	23,5	0,708
4121323	75 mm x 2" m	1		75	102	72	84	2"	50	23,5	0,753
4121324	75 mm x 2 1/2" m	1		75	105	75	100	2 1/2"	65	26,7	1,024
4121325	90 mm x 3" m	1		90	121	88	120	3"	85	30	1,488
4121327	110 mm x 4" m	1		110	148	111	147	4"	105	39	2,816



**aquatherm red pipe TRANSITION ELBOW / B1**

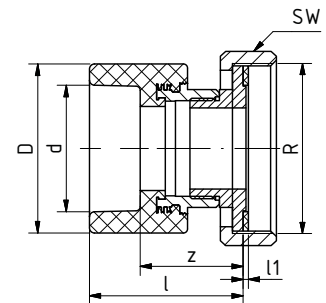
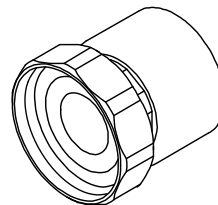
Art. no.	Dimension	PU m/pc	Price € m/pc	d [mm]	l [mm]	z [mm]	D [mm]	l1 [mm]	z1 [mm]	D1 [mm]	R	Weight [kg]
4123015	32 mm x 1/2" f	10		32	35	17	43	37	24	37	1/2"	0,088
4123016	32 mm x 3/4" f	5		32	27,5	9,5	43	51	38	44	3/4"	0,112
4123018	32 mm x 1" f	5		32	34	16	43	66,5	44,5	60,5	1"	0,265
4123020	40 mm x 1/2" f	5		40	41,75	21,25	52	40	27	37	1/2"	0,116
4123022	40 mm x 1" f	5		40	41,5	21	52	56	34	60	1"	0,265

**TRANSITION PIECE**



**aquatherm red pipe THREADED BRANCH TEE / B1**

Art. no.	Dimension	PU m/pc	Price € m/pc	d [mm]	l [mm]	z [mm]	D [mm]	l1 [mm]	z1 [mm]	D1 [mm]	R	SW [mm]	Weight [kg]
4125013	32 x 1/2" f x 32 mm	5		32	35	17	43	37	24	37	1/2"	-	0,113
4125014	32 x 3/4" f x 32 mm	5		32	27,5	9,5	43	51	38	44	3/4"	-	0,118
4125016	32 x 1" f x 32 mm	5		32	31,5	13,5	43	67	45	60	1"	39	0,274
4125018	40 x 1/2" f x 40 mm	5		40	42	21,5	52	40	27	37	1/2"	-	0,113
4125019	40 x 3/4" f x 40 mm	5		40	40,5	20	52	40,5	27,5	52	3/4"	-	0,157
4125020	40 x 1" f x 40 mm	5		40	41,5	21	52	56	34	60	1"	39	0,279
4125022	50 x 1" f x 50 mm	5		50	49,5	26	68	63,5	41,5	68,3	1"	39	0,387
4125024	50 x 1 1/4" f x 50 mm	5		50	49,5	26	68	66,5	47,5	68	1 1/4"	50	0,478
4125030	50 x 1/2" f x 50 mm	5		50	49,5	26	68	44,5	31,5	43	1/2"	-	0,237
4125031	50 x 3/4" f x 50 mm	5		50	49,5	26	68	44,5	31,5	43	3/4"	-	0,243



**aquatherm red pipe FEMALE PART UNION / B1**

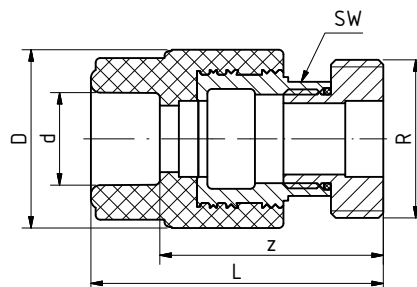
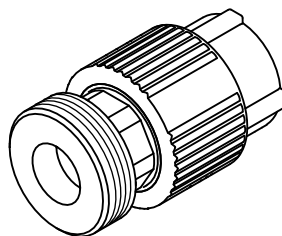
ISO-Norm

Art. no.	Dimension	PU m/pc	Price € m/pc	d [mm]	l [mm]	z [mm]	D [mm]	R	SW [mm]	l1 [mm]	Weight [kg]
4127014	nut thread 1 1/2" x 32 mm	5		32	69,5	51,5	60	1 1/2"	52	3	0,446
4127016	nut thread 2" x 40 mm	5		40	72	51,5	74	2"	64	3	0,719
4127018	nut thread 2 1/4" x 50 mm	5		50	77	53,5	84	2 1/4"	72	3	0,831
4127020	nut thread 2 3/4" x 63 mm	1		63	85	57	101	2 3/4"	89	3	1,306
4127022	nut thread 3 1/2" x 75 mm	1		75	91	61	100	3 1/2"	110	3	1,818

aquatherm red pipe metal composite fittings are manufactured from **Fusiofen**® PP-R FS and brass.



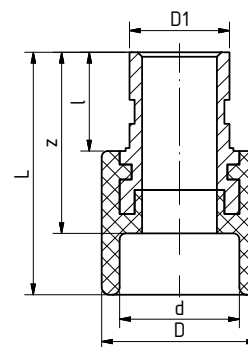
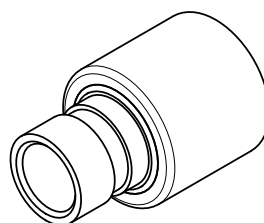
**TRANSITION PIECE**



**aquatherm red pipe COUNTERPART / B1**

with welding socket and male thread for ISO-threaded joints

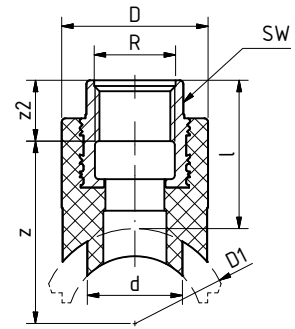
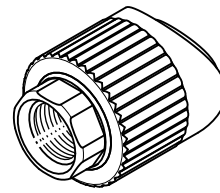
Art. no.	Dimension	PU m/pc	Price € m/pc	d [mm]	L [mm]	z [mm]	D [mm]	R	SW [mm]	Weight [kg]
4127314	32 mm x 1 1/2" m	5		32	76,5	58,5	60	1 1/2"	39	0,408
4127316	40 mm x thread 2" m	5		40	79	58,5	74	2"	50	0,635
4127318	50 mm x thread 2 1/4" m	5		50	83	59,5	84	2 1/4"	55	0,757
4127320	63 mm x thread 2 3/4" m	1		63	95	67,5	101	2 3/4"	67	1,214
4127322	75 mm x thread 3 1/2" m	1		75	100	70	100	3 1/2"	67	1,574



**aquatherm red pipe TRANSITION PIECE FOR GROOVE CONNECTION / B1**

Art. no.	Dimension	PU m/pc	Price € m/pc	d [mm]	L [mm]	z [mm]	D [mm]	D1 [mm]	Weight [kg]
4127054	40 mm x 1" groove connection	1		40	81	60,5	52	33,5	0,239
4127056	50 mm x 1 1/4" groove connection	1		50	85,5	62	68	42,20	0,397
4127058	63 mm x 1 1/2" groove connection	1		63	97,5	70	84	48,25	0,568
4127060	75 mm x 2" groove connection	1		75	97	67	100	60,3	0,853
4127062	90 mm x 3" groove connection	1		90	110	77	120	88,9	1,285
4127064	110 mm x 4" groove connection	1		110	119,5	82,5	147	114,3	2,137
4127066	125 mm x 5" groove connection	1		125	170	130	167	140	5,046

**TRANSITION PIECE**



**aquatherm red pipe WELD-IN SADDLE WITH FEMALE THREAD / B1**

Art. no.	Dimension	PU m/pc	Price € m/pc	D1 [mm]	d [mm]	l [mm]	z [mm]	z2 [mm]	D [mm]	R	SW [mm]	Weight [kg]
<b>4128214</b>	40/25 mm x 1/2" f	5		40	25	39	43	16	38,5	1/2"	24	0,088
<b>4128216</b>	50/25 mm x 1/2" f	5		50	25	39	48	16	38,5	1/2"	24	0,090
<b>4128218</b>	63/25 mm x 1/2" f	5		63	25	39	54,5	16	38,5	1/2"	24	0,089
<b>4128220</b>	75/25 mm x 1/2" f	5		75	25	39	60,5	16	38,5	1/2"	24	0,097
<b>4128222</b>	90/25 mm x 1/2" f	5		90	25	39	68	16	38,5	1/2"	24	0,090
<b>4128224</b>	110/25 mm x 1/2" f	5		110	25	39	78	16	38,5	1/2"	24	0,089
<b>4128226</b>	125/25 mm x 1/2" f	5		125	25	39	85,5	16	38,5	1/2"	24	0,092
<b>4128234</b>	40/25 mm x 3/4" f	5		40	25	39	38	21	43,5	3/4"	31	0,107
<b>4128236</b>	50/25 mm x 3/4" f	5		50	25	39	43	21	43,5	3/4"	31	0,110
<b>4128238</b>	63/25 mm x 3/4" f	5		63	25	39	49,5	21	43,5	3/4"	31	0,109
<b>4128240</b>	75/25 mm x 3/4" f	5		75	25	39	55,5	21	43,5	3/4"	31	0,109
<b>4128242</b>	90/25 mm x 3/4" f	5		90	25	39	63	21	43,5	3/4"	31	0,110
<b>4128244</b>	110/25 mm x 3/4" f	5		110	25	39	73	21	43,5	3/4"	31	0,110
<b>4128260*</b>	75/32 mm x 1" f	5		75	32	43	58,5	22	60	1"	39	0,221
<b>4128262*</b>	90/32 mm x 1" f	5		90	32	43	66	22	60	1"	39	0,222
<b>4128264*</b>	110/32 mm x 1" f	5		110	32	43	76	22	60	1"	39	0,088
<b>4128266*</b>	125/32 mm x 1" f	5		125	32	43	93,5	22	60	1"	39	0,091

with female thread and hexagon socket, with weld-in weld-on surface and weld-in socket to be fused with the inner wall of the pipe  
 The required tools for the fusion of **aquatherm red pipe** weld-in saddles are listed on page 34:

- Weld-in saddle tools, Art. no. 50614–50644

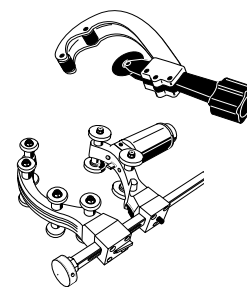
- **aquatherm** drill, Art. no. 50940–50948

\*suitable for the connection to sprinkler outlets

**CUTTER & WELDING DEVICES**

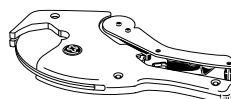
**aquatherm PIPE CUTTER**

Art. no.	for pipe dimensions	PU m/pc	Price € m/pc
50102	ø 16–40 mm	1	
50105	ø 50–125 mm	1	
50106	ø 110–160 mm	1	



**aquatherm PIPE CUTTER**

Art. no.	for pipe dimensions	PU m/pc	Price € m/pc
50104	ø 16–40 mm	1	

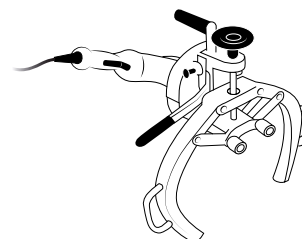


**Important:** Do not cut the aquatherm red pipe pipes with customary hack saws. aquatherm red pipe pipes can be cut with customary saws equipped with saw blades suitable for plastic.

**ORBITAL CIRCULAR SAW**

Art. no.	for pipe dimensions	PU m/pc	Price € m/pc
50108	ø 160–355 mm	1	

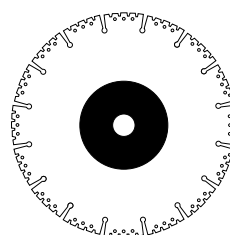
This orbital circular saw can be ordered directly from Rothenberger with Art. no. 5.5620 ([www.rothenberger.com](http://www.rothenberger.com)). High-performance orbital circular saw for fast, precise, perfectly aligned and right-angled cutting of plastic pipes 160–355 mm at the building site or in the workshop.



**CUTTING DISC FOR PLASTIC**

Art. no.	Dimension	Borehole	PU m/pc	Price € m/pc
50107	ø 125 mm	22,2 mm	1	
50109	ø 230 mm	22,2 mm	1	

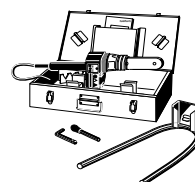
Application: for each angle grinder  
Design: diamond galvanized cutting disc



**aquatherm MANUAL WELDING DEVICE (500 W)**

Art. no.	for pipe dimensions	PU m/pc	Price € m/pc
50336	ø 16–32 mm	1	

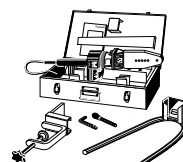
With base and case for tools



**aquatherm MANUAL WELDING DEVICE (800 W)**

Art. no.	for pipe dimensions	PU m/pc	Price € m/pc
50337	ø 16–63 mm	1	

With base and case for tools

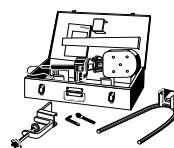


## CUTTER & WELDING DEVICES

### aquatherm MANUAL WELDING DEVICE (1400 W)

Art. no.	for pipe dimensions	PU m/pc	Price € m/pc
50341	ø 50–125 mm	1	

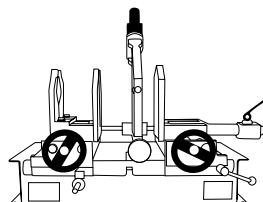
With base and case for tools



### aquatherm WELDING MACHINE (1400 W)

Art. no.	for pipe dimensions	PU m/pc	Price € m/pc
50148	ø 50–125 mm	1	

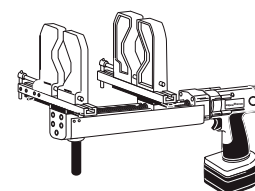
incl. welding tools 50–125 mm, roll stand and wooden transport case



### aquatherm ELECTRIC WELDING JIG

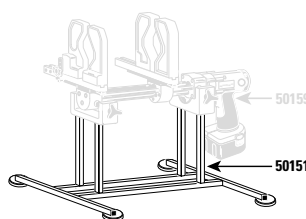
Art. no.	for pipe dimensions	PU m/pc	Price € m/pc
50159	ø 63–125 mm	1	

incl. spare battery, charging station and metal case Support: Art. no. 50151 on request



### aquatherm BASE FOR ART. NO. 50159

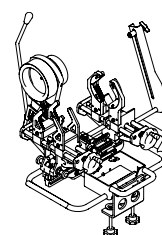
Art. no.	Dimension	PU m/pc	Price € m/pc
50151		1	



### aquatherm WELDING MACHINE (1400 W) LIGHT

Art. no.	for pipe dimensions	PU m/pc	Price € m/pc
50145	ø 63–125 mm	1	

aquatherm manual welding device (1400 W) and wooden transport case

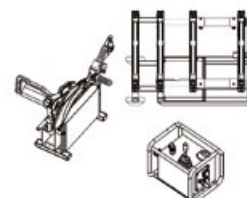


### BUTT WELDING MACHINE WIDOS

Art. no.	Dimension	PU m/pc	Price € m/pc
50352*	ø 160–250 mm	1	

The butt-welding-machine can be purchased directly from Widos ([www.widos.de](http://www.widos.de))

\* Also available in design with 110 volt (Art. no. 450352 = ø 160–250 mm / 450353 = ø 160–315 mm / 450353 = ø 160–315 mm / 450354 = ø 160–355 mm / 450355 = ø 200–450 mm)

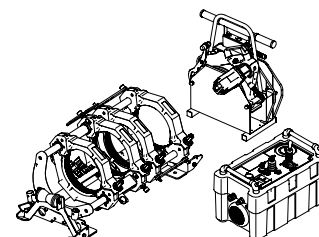


### BUTT WELDING MACHINE RITMO

Art. no.	for pipe dimensions	PU m/pc	Price € m/pc
50165	ø 160–250 mm	1	

incl. wooden transport box.

The butt welding machine can be obtained directly from Ritmo ([www.ritmo.it](http://www.ritmo.it)).



**WELDING TOOLS & DRILLS**

**aquatherm TEMPERATURE MEASURING DEVICE**

Art. no.	Dimension	PU m/pc	Price € m/pc
50188		1	

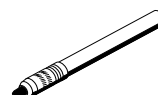
to check the correct welding temperature



**aquatherm THERMOCOLOUR PENCIL**

Art. no.	Dimension	PU m/pc	Price € m/pc
50190		1	

to check the correct welding temperature



**aquatherm CLEANING WIPES**

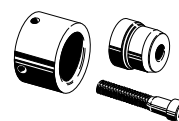
Art. no.	Dimension	PU m/pc	Price € m/pc
50193	Box with 100 towels	1	

for electrofusion sockets



**aquatherm WELDING TOOL**

Art. no.	Dimension [mm]	PU m/pc	Price € m/pc
50212	32	1	
50214	40	1	
50216	50	1	
50218	63	1	
50220	75	1	
50222	90	1	
50224	110	1	
50226	125	1	



**aquatherm REPAIR KIT**

Art. no.	Dimension	PU m/pc	Price € m/pc
50307	7 mm	1	
50311	11 mm	1	

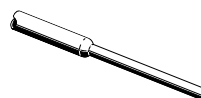
to close pipe holes up to 10 mm (pipe repair stick Art. no. 60600)



**aquatherm red pipe REPAIR STICK**

Art. no.	Dimension	PU m/pc	Price € m/pc
4160600	7/11 mm	1	

Material: **Fusiofen** PP-R FS to close pipe holes up to 10 mm.  
Tool: **aquatherm green pipe** repair kit (Art. no. 50307 + 50311).

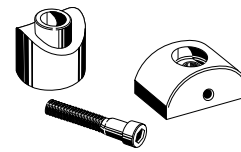


## WELDING TOOLS & DRILLS

### aquatherm WELDING TOOL

for welding saddles of Art. no. 4115168–4115198 and 4128214–4128266

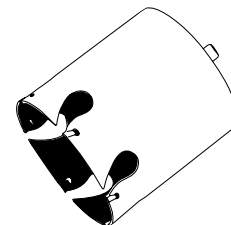
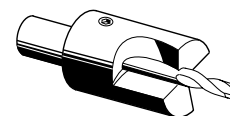
Art. no.	Dimension	PU m/pc	Price € m/pc
50614	40 x 20/25 mm	1	
50616	50 x 20/25 mm	1	
50619	63 x 20/25 mm	1	
50620	63 x 32 mm	1	
50623	75 x 20/25 mm	1	
50624	75 x 32 mm	1	
50625	75 x 40 mm	1	
50627	90 x 20/25 mm	1	
50628	90 x 32 mm	1	
50629	90 x 40 mm	1	
50631	110 x 20/25 mm	1	
50632	110 x 32 mm	1	
50634	110 x 40 mm	1	
50635	110 x 50 mm	1	
50636	125 x 20/25 mm	1	
50638	125 x 32 mm	1	
50640	125 x 40 mm	1	
50642	125 x 50 mm	1	
50644	125 x 63 mm	1	
50648	160 x 20/25 mm	1	
50650	160 x 32 mm	1	
50652	160 x 40 mm	1	
50654	160 x 50 mm	1	
50656	160 x 63 mm	1	
50657	160 x 75 mm	1	
50658	160 x 90 mm	1	



### aquatherm DRILL

for installation of weld-in saddles

Art. no.	Dimension	PU m/pc	Price € m/pc
50940	20 & 25 mm (for pipes 40–160 mm)	1	
50942	32 mm	1	
50944	40 mm	1	
50946*	50 mm	1	
50948*	63 mm	1	
50987*	75 mm	1	
50988*	90 mm	1	



\* may only be used in fixed drilling machines

### QUICK CHANGE ADAPTER 75 – 90MM

Art. no.	Dimension	PU	Box unit	Price € pc
50973	for Art. no. 50987 – 50988	1		

